



Air Curtain

Water Heating type
Instruction Manual



**Before using this unit,
please read this instruction manual completely.**

- Heating by hot water for this unit, but not by electric power. It is a cooling air curtain when turning off the hot water source.
- The unit's pressure range: 1.8~2.0Mpa
- The unit must install indoor! And it must have the measure of keeping temperature to avoid breach the changer for freezing.
- Please install the unit by professional for your right!
- Please read the unit's user guide carefully before using, and keep them safely.

● Installation guidance

Before installing the unit, you must read carefully the installation guidance to ensure the unit working rightly.

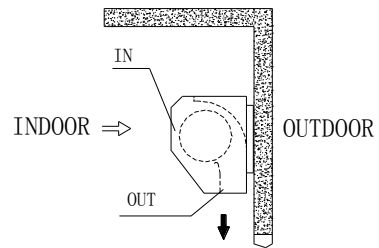
- Please install the unit by professional before using!

-

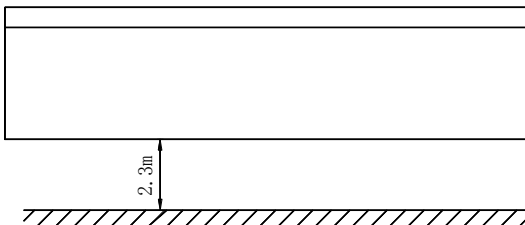
Please install the unit in a sturdy place to avoid the shaking and ensure its security (because it maybe causes the wall becoming flexible or shaking and noise).



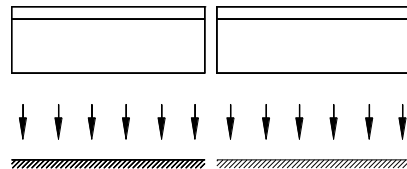
Please install the unit inside the room.



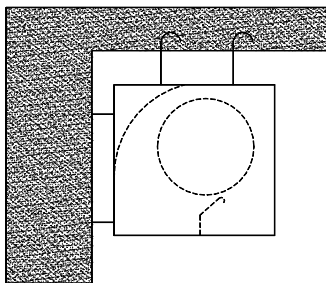
Don't install the unit too low, no less than 2.3 meters from the ground.



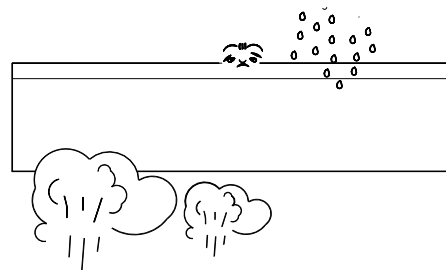
When the entrance is wider than the unit, it is recommended to install two or more units in parallel. In this case, provide 20-40mm gaps between the units.



Don't allow gaps between the unit and the wall. When hanging it from the ceiling, using the enclosed ceiling brackets.



Don't install the unit in a place where it is splashed by water, exposed to excessive steam, explosive gas or corrosive gas.



● CAUTIONS

- Use the unit at the rate voltage and frequency indication on the nameplate.
- Disconnect power source before unit operation.
- Routing maintenance must be done every year.
- Never use petrol, benzene, thinner or any other such chemical for clearing the unit.
- Don't allow water or anything enter the motor.

f)、 When power supply comes from socket, the plug must accord with IEC335-1. When the power cord is connected with charging line directly, all polarity switches that the contact gap is 3mm at least must be installed in the charging line.

- The unit must install indoor! And it must have the measure of keeping temperature to avoid breach the changer for freezing.
- The unit heating by hot water or steam, in from the bottom tube and out from the top tube. It must have a drain tap in the top tube to drain the air or water.
- The hot water must be intenerated water.
- Every operation must drain out the cooling water or air inside the unit. Then turn on the unit after 10 minutes. And draining out all the water in the unit when stop working.
- For ensuring the unit's operation, it must supply the hot source continuously.
- For the safe of the unit, it must not supply the hot source only but do not turn on the unit!
- Keep the units clear, cleaning the changer of the unit for some times.