



Air Curtain

PTC Normal & Heating Type
Instruction Manual



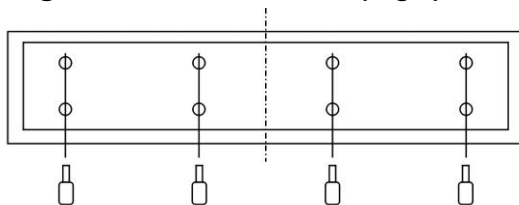
**Before using this unit,
please read this instruction manual carefully.**

PRODUCT OUTLINE:

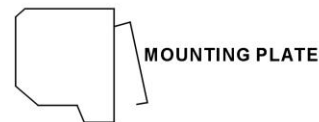
1. Compact body, space saving
2. All-metal housing, advanced fire resistance, simple installation and easy cleaning
3. Optimized fan wheel with large air volume and low noise; compact construction, obtaining stable and even air curtain
4. Flexible control methods: swing-switch control, microprocessor soft-touch control and microprocessor remote control, meeting different demands.
5. 2 minutes delay turn off protecting device automatically performing

INSTALLATION:

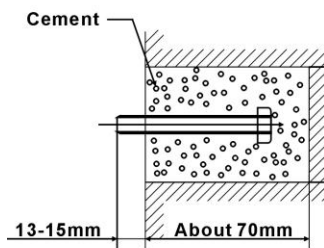
1. Unscrew the mounting plate and take it off. (Fig. 1, Fig.2)
2. Drill a hole as the instruction. Then put into the bolt and fix it with cement. (Fig.3)
3. Hanging on the mounting plate and ensure fix it. (Fig.4)
4. Installing the machine onto the mounting plate and ensure the safety, than fix it tighten with screws. (Fig.5)



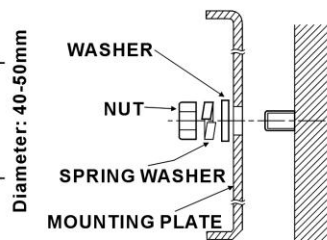
(Fig. 1)



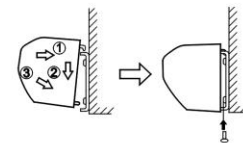
(Fig. 2)



(Fig. 3)



(Fig. 4)



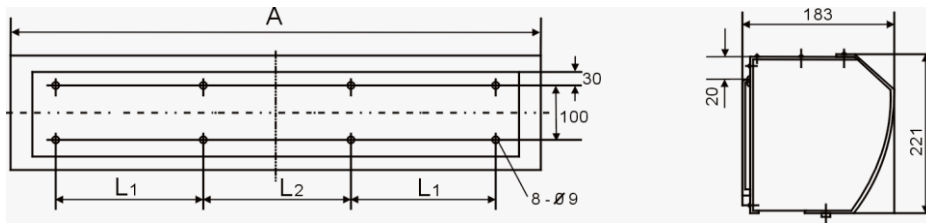
(Fig. 5)

CONDITIONS OF USE:

Please DO NOT install the unit under following conditions:

1. Do not operate ambient temperature over 40°C or below -10°C.
2. A relative humidity over 90% at room temperature and steamy area.
3. Contains of oily smoke.
4. Materials or gases may cause explosion.
5. Nearly corrosive gases.
6. Locate in where may be sprinkle with water.

DIAGRAM:



[Dimension : mm]

BODY LENGTH	A	L1	L2
900	900	270	300
1000	1000	320	300
1200	1200	420	300
1500	1500	570	300

MAINTENANCE AND REPAIR:

Troubles	Reasons	Eliminating methods
No action or no air out	<ol style="list-style-type: none"> 1. No power 2. No phase 3. Switch-off 4. Switch-broken 5. Impeller top thread-loose 6. Capacitor-broken 7. Motor winding-burnt 	Use after power on Use after checking and repairing Switch-on Replace switch Use after stable installation Replace capacitor Replace motor
Small air flow	<ol style="list-style-type: none"> 1. Low running rate 2. Much dust in blades(oil spots) 3. Improper type 	Turn into high speed Cleaning Reselect proper type
Overheating on wire and switch	<ol style="list-style-type: none"> 1. Undersize wire diameter 2. Undersize capacity 3. Connection-loose or insufficient connection 4. Off switch contact 	Replace reliable quality and proper diameter wire Replace switch Reliable reconnection Replace switch

Excessive noise when working	1	Unstable installation	Strengthen or reinstall
	2	Inlet opening housing-loose	Strengthen
	3	Air outler diflector-loose	Strengthen
	4	Foreign matters enter in	Strength or reinstall
	5	Impeller top thread-loose	Eliminating
	6	Air wheel-broken or rubber ring-broken	Replace new air wheel
	7	Oilstarvaion of bearings	Oiling or replace bearings

Please read the above carefully before applying for guarantee repair

Guarantee repair:

If any problems happen within a year since you bought the products,you can have the right to repair the pruducts free of charge in the named place,please show the invoice and specification.

Followings are not allowed to guarantee reparaie;

1 man-made damages

2 damages by foreign matters enter in the machine

3 damagers by wrong connection when installing.