



Air Curtain

Centri-fugal type

Instruction Manual



**Before using this unit,
please read this instruction manual completely.**

PRODUCT OUTLINE:

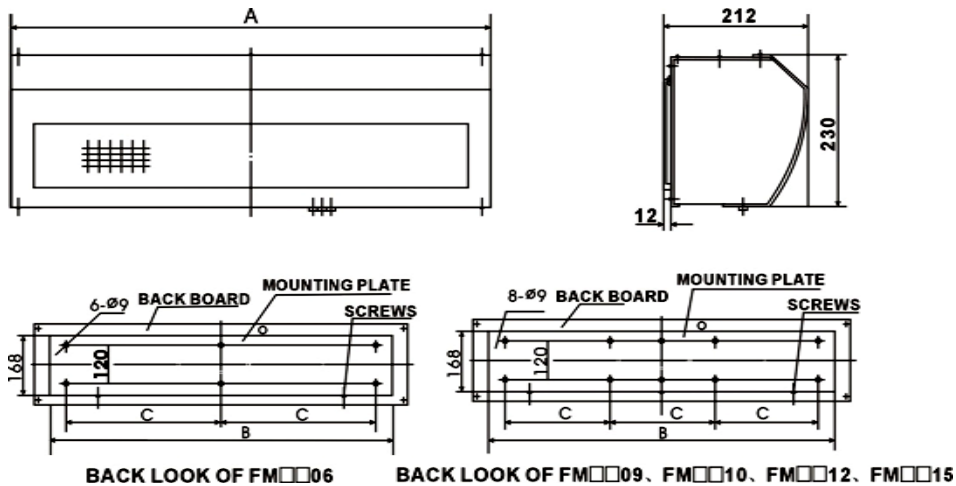
AIR CURTAINS are designed for installation in shops, office buildings, hotels and restaurants doorway. They discharge a curtain of air, which effectively separated inside&outside air. Use them to keep out insects, unpleasant smells, and dust from indoor where a large number of people pass in and out. These air curtains also prevent air escaping from an air-conditioned room.

CONDITIONS OF USE:

Please DO NOT install the unit under following conditions:

1. Do not operate in ambient temperature over 50°C or below -10°C.
2. A relative humidity over 95% at room temperature and steamy area.
3. Do not install in oily smoke condition.
4. Materials or gases may cause explosion.
5. Do not operate in area of corrosive gas.
6. Do not install near fire sprinkler.

DIAGRAM:

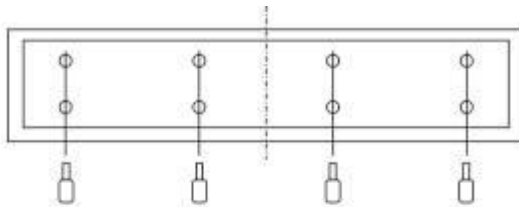


[Dimension : mm]

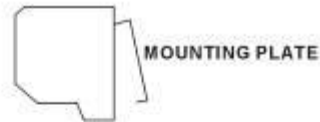
Model No.	A	B	C
LM4509Y	900	850	250
LM4512Y	1200	1150	333
LM4515Y	1500	1450	450

INSTALLATION:

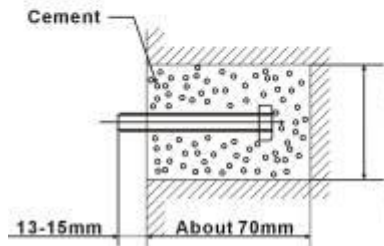
1. Unscrew the mounting plate and take it off. (Fig. 1, Fig.2)
2. Drill a hole as the instruction. Then put into the bolt and fix it with cement. (Fig.3)
3. Hanging on the mounting plate and ensure fix it. (Fig.4)
4. Installing the machine onto the mounting plate and ensure the safety, than fix it tighten with screws. (Fig.5)



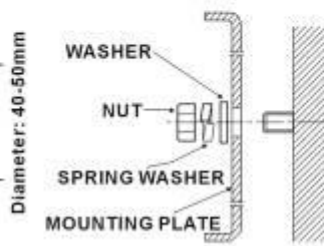
(Fig. 1)



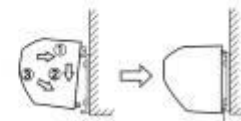
(Fig. 2)



(Fig. 3)



(Fig. 4)

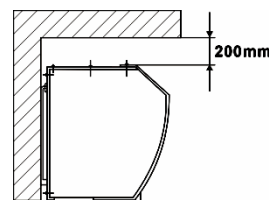


(Fig. 5)

CAUTIONS / INSTALLATIONS:

During installation, please pay special attention to the following points in order to obtain the ultimate efficiency.

1. Install on immovable and rigid place to avoid vibrations when machine is running and also for safety reasons and unnecessary noise caused by vibration can be prevented.
2. AIR CURTAINS are used for indoor purpose.
3. Depending on the height to choose the most suitable model. If it fixed too high, the shut-off distance will be affected and the efficiency will be reduced.
4. The air is drawn into the unit and is blown out downwards.
5. Several units can be mounted next to each other where there is wide door opening . Under such installation, a narrow space of 20-40mm is advisable.
6. During installation, the mounting plate should be fastened flatly with the walls.
7. The distance between the unit and the ceiling must be at least 200mm apart.
8. The unit is installed horizontally.
9. Recommend installing the machine at the height of at least 2.3M above the ground.
10. A triple pole switch should precede the appliance with at least 3mm breaking gap.



MAINTENANCE AND REPAIR:

1. Unplug the unit from any power source prior checking or maintenance.
2. Keep electric motor or other parts away from moisture to avoid short circuit.
3. Regular checking and maintenance is recommended, clean all the dust off.
Simply damp with mild detergent by a cloth for cleaning.
4. Detach the unit only by professionals.

SPECIFICATIONS:

Model No.	Power (W)		Air Velocity (m/s)		Air Vol. (m ³ /h)	Noise (dB)		Weight (kg)
	HI	LO	HI	LO		HI	LO	
LM4509Y	260	210	20	15	1400	55	45	15.2
LM4512Y	400	325	20	15	1900	60	50	17.2
LM4515Y	600	490	20	15	2385	62	55	19.5

NOTE: Rated voltage and frequency are stated as per rating label.